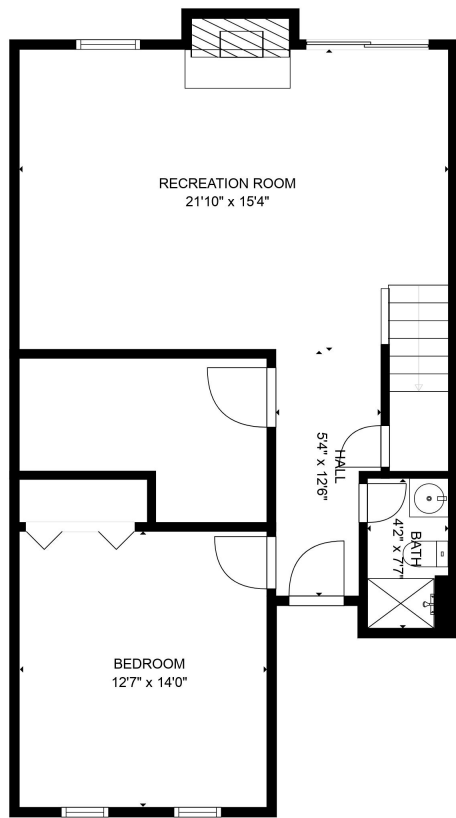
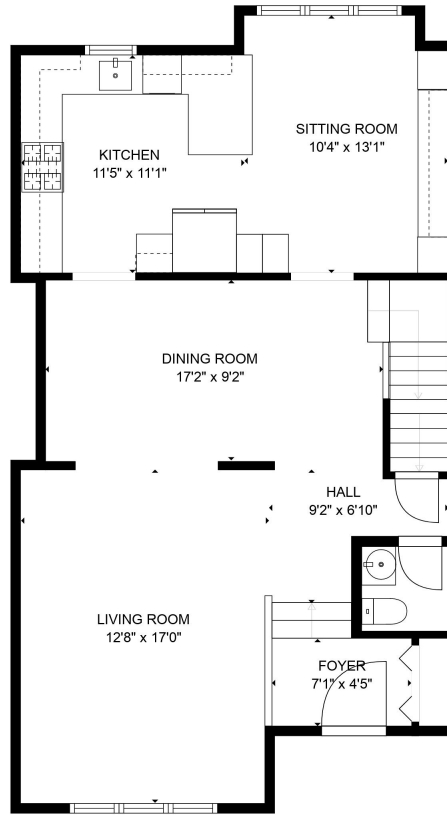


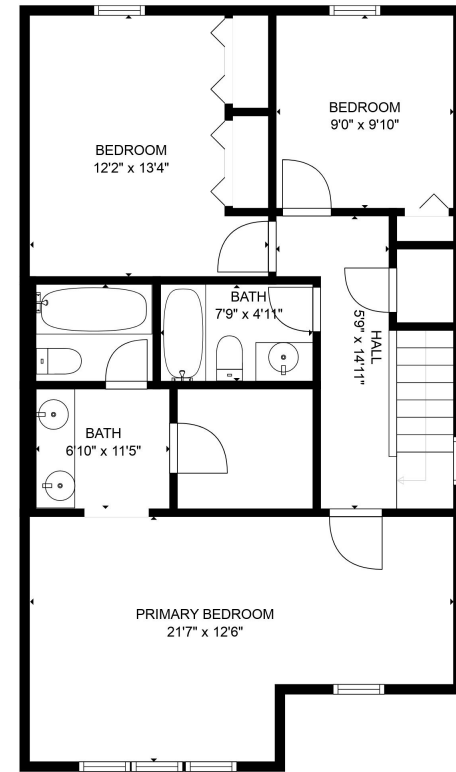
3067 Windwood Farms Drive | Oakton, VA



LOWER LEVEL



MAIN LEVEL



UPPER LEVEL

GROSS INTERNAL AREA  
 LOWER LEVEL: 759 sq. ft, MAIN LEVEL: 800 sq. ft  
 UPPER LEVEL: 781 sq. ft  
 TOTAL: 2340 sq. ft

MEASUREMENTS ARE CALCULATED BY CUBICASA TECHNOLOGY. DEEMED HIGHLY RELIABLE BUT NOT GUARANTEED.

Proudly Presented by Amber Harris | Keller Williams Capital Properties  
 301.922.7355 Mobile | 202.243.7700 Office | amber@athomedc.com



KELLERWILLIAMS.  
 CAPITAL PROPERTIES

